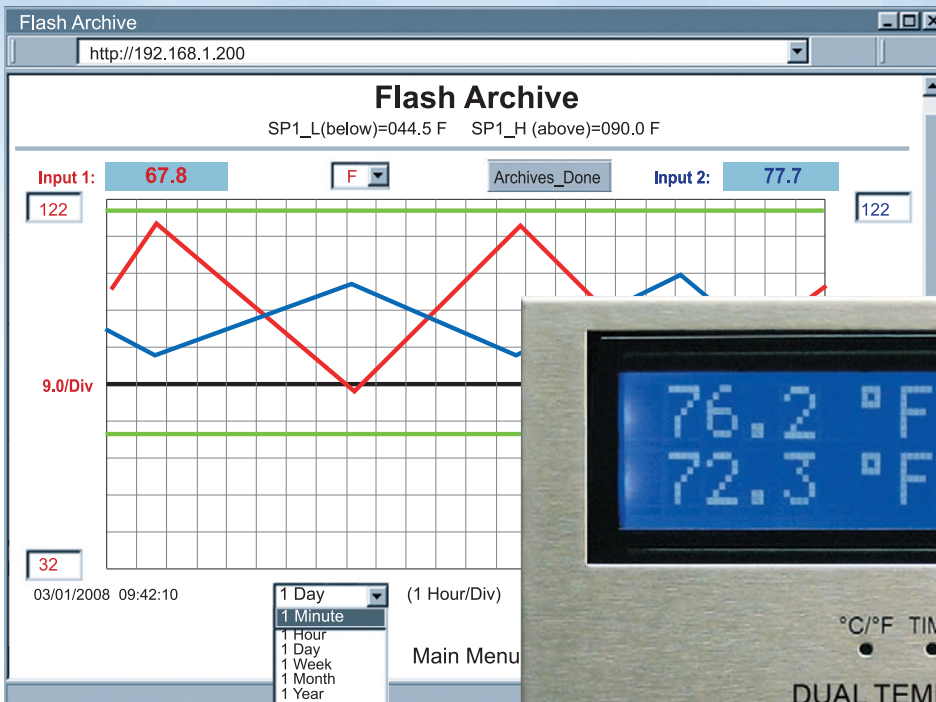


Monitor Temperature over the Internet



\$495
iSE-TC

- ✓ Dual Thermocouple
- ✓ 10 Thermocouple Types
- ✓ Virtual Chart Recorder
- ✓ Email Alarms
- ✓ Two Relay Alarms
- ✓ Flash Memory Card
- ✓ Web Server
- ✓ No Special Software Required

The NEWPORT® iSE-TC provides Web-based temperature monitoring in critical equipment and locations such as computer server rooms, clean rooms, laboratories, museums, warehouses, or any remote facility.

View and record temperature on two independent thermocouple channels, over an Ethernet network or the Internet with no special software—just a Web browser.

EMAIL ALARMS

The device can trigger an alarm if temperature goes above or below a set point that you determine. Your alarm can be sent by email to a single user or to a group distribution list, including text messages to Internet enabled cell phones and PDA's.

PHYSICAL THREATS

The NEWPORT iSE-TC includes screw terminals for two contact closures that work with common alarm sensors. You can instruct the iSE-TC monitor to send an alarm if a door is opened, a window is broken, or a fire sprinkler goes off.

POWER FAILURE

The iSE-TC monitor can trigger an alarm if the AC power fails. The iSE-TC will continue to collect data for ten days powered by a standard 9 Volt alkaline battery (included). The data is stored in nonvolatile flash memory and can later be downloaded over the Ethernet.

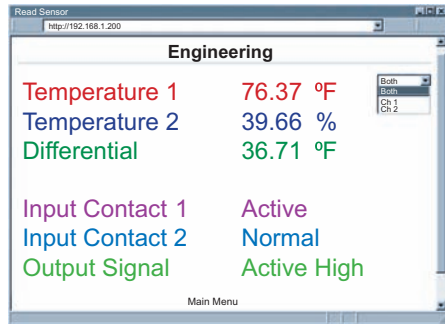
LOCAL ALARMS

The NEWPORT iSE-TC monitor includes two 1.5 Amp output relays that are controlled by the alarm conditions you select. The relays can trigger flashing lights and a siren for example to alert personnel near the scene.

With the easy Web-based setup page, the two relays can be programmed for two temperature inputs, and high or low set points, as well as alarm conditions triggered by contact closures. The relays can also be programmed to turn off when conditions return to normal, or programmed to remain latched and require a manual reset.

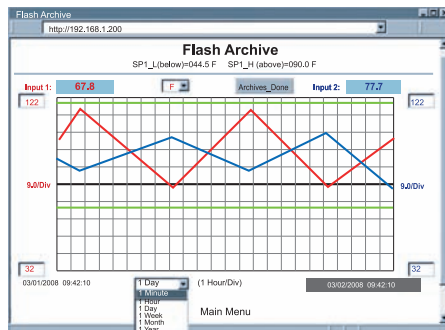
VIEW CHARTS AND GRAPHS ON THE WEB

The NEWPORT iSE-TC serves Active Web Pages to display real time readings, display charts of temperature, or log data in standard data formats for use in a spreadsheet or data acquisition program such as Excel or Visual Basic.



The virtual chart viewed on the web page is a JAVA™ Applet that records a chart over the LAN or Internet in real time. With the NEWPORT iSE-TC, there is no need to invest time and money learning a proprietary software program to log or chart the data.

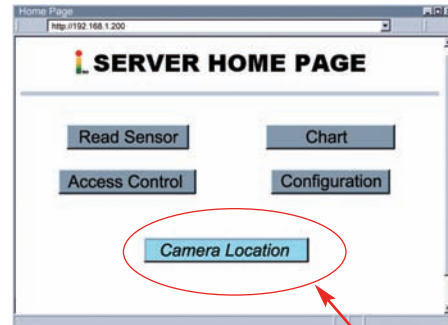
Chart scales are fully adjustable on the fly. For example, the chart can display one minute, one hour, one day, one week, one month or one year. Temperature can be charted across the full span or within any narrow range.



The iSE-TC can display and chart absolute measurements in two locations and a differential measurement between the two locations. The iSE-TC can take thermocouple types J, K, T, E, R, S, B, C, N, and L measuring temperatures up to 1,820°C (3,308°F). The iSE-TC includes a pair of type K thermocouples.

LINK TO WEB CAM OR IP CAMERA

The Web page includes a link to a "Web Cam" or "IP camera" (not included).



If you get a message about an alarm condition, you can quickly click on the link to view the actual scene over the Internet.

FLASH MEMORY

The NEWPORT iSE-TC records data on a removable 2-MByte Flash Memory card (included) that can store one full year of readings taken at one-minute intervals (or two months of readings taken at ten second intervals).

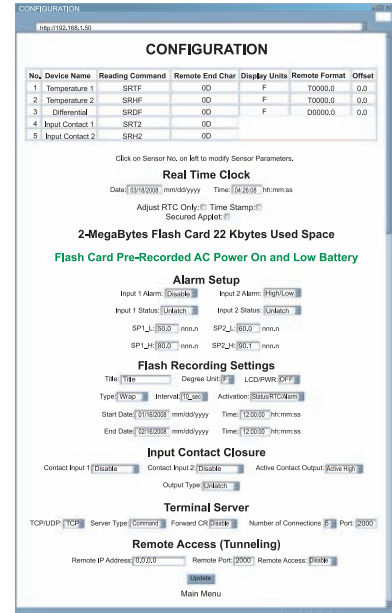


Up to four years of temperature readings can be stored on the optional 8 MByte card. Even if the Ethernet network fails, data will continuously record on the built-in nonvolatile flash memory.

Installation and operation of the NEWPORT iSE-TC monitor requires no special training, tools, or software. The device connects to any Ethernet network with standard cable and plugs and is powered by any AC outlet supplying 110-230 VAC.

AWARD-WINNING TECHNOLOGY

The NEWPORT iSE-TC is simple to install and use, and features NEWPORT's award-winning iServer technology that requires no special software except a Web Browser.



The iSE-TC connects to an Ethernet Network with a standard RJ45 connector and sends data in standard TCP/IP packets. It is easily configured with a simple menu using a Web Browser and can be password protected. From within an Ethernet LAN or over the Internet, the user simply types its IP address or an easy to remember name such as "Cleanroom 5" or "Midwest Server Room" in any Web Browser, and the iSE-TC serves a Web Page with the current readings.

TYPICAL APPLICATIONS

The NEWPORT iSE-TC is great for monitoring temperature in applications such as: clean rooms, computer rooms, HVAC systems, pharmaceutical and food processing and storage, hospitals, laboratories, semiconductor fabs, electronic assembly, warehousing, museums, manufacturing, farm animal shelters, greenhouses, and many more.

NEWPORT iServer products are designed and manufactured in Santa Ana, California.

Specifications Sensor Thermocouple Input

Temperature Range:

refer to Thermocouple Chart

Temperature Accuracy:

refer to Thermocouple Chart

Resolution: 1°/0.1°

Temperature Stability: 0.08°C/°C

Thermocouple Cold End Tracking:

0.05°C/°C

Thermocouple Lead Resistance:

100 ohm max.

Thermocouple Type (ITS 90):

J, K, T, E, R, S, B, C, N, L

Interfaces

Ethernet 10Base-T (RJ45)

Supported Protocols

TCP/IP, UDP/IP, ARP, ICMP, DHCP, DNS, HTTP, and Telnet

Indicators (LED's) Network Activity, Network Link, Transmit and Diagnostics

LCD Display

32 Digits 4.8 x 9.7mm (0.19 x 0.38")

Relay Outputs Two Relays 1.5A @ 30Vdc

Alarm I/Os Two Contact Inputs, One Open Collector Output 150mA @ 30Vdc

Memory

512 Kbytes Flash, 16 Kbytes SRAM

Memory Data Flash Card

2 M bytes: 2 months of data storage at 10 second logging intervals or 1 year at 1 minute intervals

Management

Device configuration and monitoring through embedded WEB server.

Embedded WEB Server

Serves WEB pages containing real-time data and live updated charts within definable time intervals.

Software Firmware upgradeable.

Including an Excel program for automatic data logging within definable time intervals, compatible with all Windows operating systems.

Power

Input: 9-12 Vdc

Safety Qualified ac power adapter:

Input: 100-240Vac, 50/60Hz

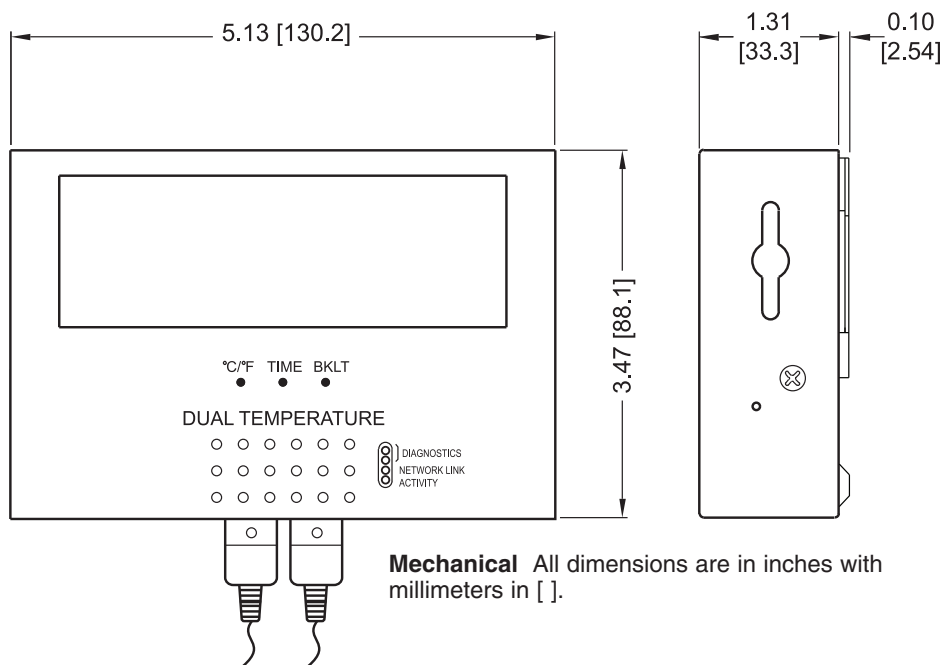
Nominal Output: 9 Vdc @ 0.5A, incld

Consumption: 2.5 W max.

Battery: 9Vdc, Alkaline, included

Thermocouple Chart

	Input Type	Range	Accuracy
J	Iron - Constantan	-210 to 760°C / -346 to 1400°F	0.4°C / 0.7°F
K	CHROMEPA®- ALOMEGA®	-270 to -160°C / -160 to 1372°C -454 to -256°F / -256 to 2502°F	1.0°C / 0.4°C 1.8°F / 0.7°F
T	Copper - Constantan	-270 to -190°C / -190 to 400°C -454 to -310°F / -310 to 752°F	1.0°C / 0.4°C 1.8°F / 0.7°F
E	CHROMEPA®- Constantan	-270 to -220°C / -220 to 1000°C -454 to -364°F / -364 to 1832°F	1.0°C / 0.4°C 1.8°F / 0.7°F
R	Pt / 13%Rh-Pt	-50 to 40°C / 40 to 1768°C -58 to 104°F / 104 to 3214°F	1.0°C / 0.5°C 1.8°F / 0.9°F
S	Pt / 10%Rh-Pt	-50 to 100°C / 100 to 1768°C -58 to 212°F / 212 to 3214°F	1.0°C / 0.5°C 1.8°F / 0.9°F
B	30%Rh-Pt / 6%Rh-Pt	100 to 640°C / 640 to 1820°C 212 to 1184°F / 1184 to 3308°F	1.0°C / 0.5°C 1.8°F / 0.9°F
C	5%Re-W / 26%Re-W	0 to 2320°C / 32 to 4208°F	0.4°C / 0.7°F
N	Nicrosil - Nisil	-250 to -100°C / -100 to 1300°C -418 to -148°F / -148 to 2372°F	1.0°C / 0.4°C 1.8°F / 0.7°F
L	J DIN	-200 to 900°C / -328 to 1652°F	0.4°C / 0.7°F



Mechanical All dimensions are in inches with millimeters in [].

Environmental

Operating Temperature: 0 to 60°C (32 to 140°F)

Material: SS 304 case w/ wall mount bracket.

Weight: 444.5g (0.98 lbs.)

Model No.	Description	Price
iSE-TC	iSE monitor for dual thermocouple input, includes an LCD display, 2 Mbytes memory data flash card, 2 relay alarms, battery back-up, universal (100-240 Vac) power adapter and 2 Type K thermocouples.	\$495
Accessories		
CAL-3*	NIST traceable calibration certificate. Three temperature points for each input (for new iSE-TC) For * insert: J, K, T, E, B, R, S, C, N, or L	100
iSE-TH-MC2	Memory data flash card, 2 Mbyte / 1 year @ 1 minute intervals.	10
iSE-TH-MC4	Memory data flash card, 4 Mbyte / 2 years @ 1 minute intervals.	20
iSE-TH-MC8	Memory data flash card, 8 Mbyte / 4 years @ 1 minute intervals.	30
UNIV-AC-100/240	Replacement universal ac power adapter	25

Ordering Example: For a NIST traceable calibrated iSE-TC, include the type of thermocouple you want the unit calibrated for: iSE-TC monitor for dual thermocouple input and **CAL-3J** calibration certificate, **\$495 + 100 = \$595.**